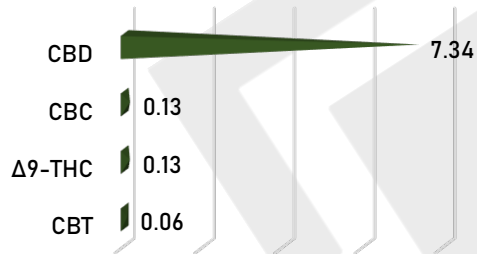
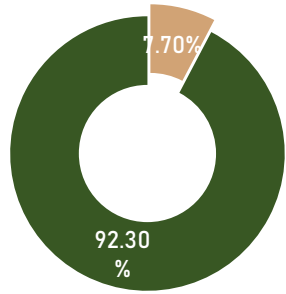


2000mg/30mL Strawberry Full Spectrum 20PT2040605

Sample Received:	6-May-20	Sample Type:	Tincture
Analysis Reported:	7-May-20	Test:	Potency

**CANNABINOID PROFILE**

**TOTAL CANNABINOID CONTENT**



Cannabinoid	LoD (mg/L)	Result (%)	Result (mg/g)
Cannabidiol (CBD)	0.39	7.34	73.42
Cannabigerol (CBG)	0.41	0.03	0.30
Δ9-Tetrahydrocannabinol (Δ9-THC)	0.33	0.13	1.31
Cannabacitrin (CBT)	0.20	0.06	0.65
Cannabichromene (CBC)	0.32	0.13	1.35
Cannabinol (CBN)	0.24	0.00	0.00
Tetrahydrocannabivarin (THCV)	0.42	0.00	0.00
Δ8-Tetrahydrocannabinol (Δ8-THC)	0.42	0.00	0.00
Cannabigerolic acid (CBGA)	0.35	0.00	0.00
Cannabidiolic acid (CBDA)	0.34	0.00	0.00
Cannabidivarin (CBDV)	0.31	0.00	0.00
Δ9-Tetrahydrocannabinolic acid (THCA)	0.32	0.00	0.00
<b>Total Cannabinoids**</b>		<b>7.70</b>	<b>77.03</b>
<b>Total Potential THC*</b>		<b>0.13</b>	<b>1.31</b>
<b>Total Potential CBD*</b>		<b>7.34</b>	<b>73.42</b>
<b>Total Potential CBG*</b>		<b>0.03</b>	<b>0.30</b>

This column gives you the ratio of each isolated cannabinoid in your particular formulation and batch. Here at 7.34, you know that in a full ml dropper, 7.34% of that dropper consists of CBD.

This column is a measure of each cannabinoid in milligrams/g. Otherwise, milligrams per full dropper (ml). Here we see CBD coming in at 73.42, which is slightly higher than the 66mg per ml in a 2000 mg, 1oz bottle.

This column is your total percentage of major cannabinoids. You can see THC in this batch comes in at 0.13%, which is an important measure since it is below the legal .3% maximum.

\*Total Potential THC/CBD/CBG is calculated using the following formulas to consider the loss of a carboxyl group during decarboxylation step.

\*Total THC = THC + (THCa \* (0.877)) and Total CBD = CBD + (CBDA \* (0.877)) and Total CBG = CBG + (CBGa \* (0.877))

\*\*Total Cannabinoids result reflects the absolute sum of all cannabinoids detected.

% = % (w/w) = Percent (Weight of Analyte / Weight of Product)

**REMARKS**

Passed visual inspection for particulates, mold, mildew, and other foreign substances.

**FINAL AUTHORIZATION**

 ANALYZED BY/DATE	7-May-20	 AUTHORIZED BY /DATE	7-May-20	 RELEASED BY/DATE	7-May-20
--	----------	--	----------	---	----------

Laboratory results are based on the sample submitted to Extract Labs, LLC, in the condition it was received. Extract Labs, LLC warrants that all analyses performed were done in a professional manner in accordance with all relevant standard laboratory practices and good manufacturing practices. Extract Labs, LLC is currently in the process of obtaining ISO 17025 accreditation but has not yet been obtained. All data was generated using certified reference materials and NIST traceable reference standards. Report can only be reproduced with the written consent of Extract Labs, LLC.

